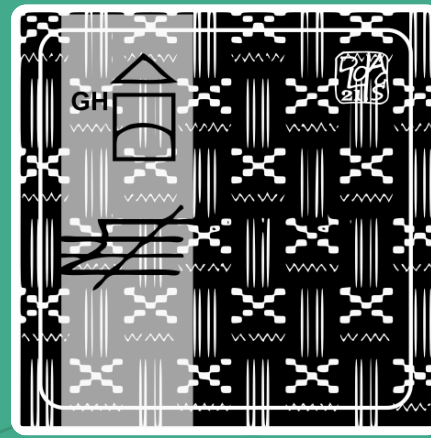


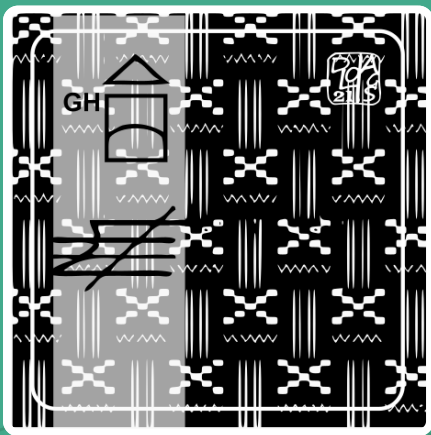
● GHANA

- 07- COMMUNICATION
- APPARENCE
- TEXTILE
- TISSU



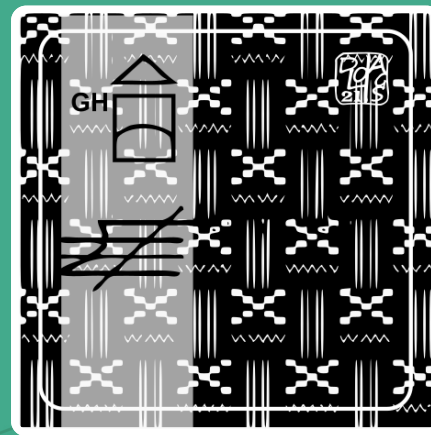
● GHANA

- 07- COMMUNICATION
- APPARENCE
- TEXTILE
- TISSU



● GHANA

- 07- COMMUNICATION
- APPARENCE
- TEXTILE
- TISSU



● GHANA

- 07- COMMUNICATION
- APPARENCE
- TEXTILE
- TISSU



kente

Kente is an iconic West African textile, particularly associated with the Akan people of Ghana. Composed of narrow strips woven separately and then joined together, it is characterized by vibrant geometric patterns. Each combination of patterns and colors can carry a specific meaning. Some evoke power, others wisdom, prosperity, or the memory of ancestors. Kente is therefore not merely a garment; it constitutes a visual language. Historically linked to royal courts, it has over time become a much broader cultural symbol. Its influence now extends far beyond the African continent. It is frequently used within diasporas as a marker of identity and historical continuity. Kente illustrates the ability of textiles to convey ideas and values. Like writing, fabric can tell a story. Its patterns show that textiles are often cultural archives as important as written texts.



kente

Kente is an iconic West African textile, particularly associated with the Akan people of Ghana. Composed of narrow strips woven separately and then joined together, it is characterized by vibrant geometric patterns. Each combination of patterns and colors can carry a specific meaning. Some evoke power, others wisdom, prosperity, or the memory of ancestors. Kente is therefore not merely a garment; it constitutes a visual language. Historically linked to royal courts, it has over time become a much broader cultural symbol. Its influence now extends far beyond the African continent. It is frequently used within diasporas as a marker of identity and historical continuity. Kente illustrates the ability of textiles to convey ideas and values. Like writing, fabric can tell a story. Its patterns show that textiles are often cultural archives as important as written texts.



kente

Kente is an iconic West African textile, particularly associated with the Akan people of Ghana. Composed of narrow strips woven separately and then joined together, it is characterized by vibrant geometric patterns. Each combination of patterns and colors can carry a specific meaning. Some evoke power, others wisdom, prosperity, or the memory of ancestors. Kente is therefore not merely a garment; it constitutes a visual language. Historically linked to royal courts, it has over time become a much broader cultural symbol. Its influence now extends far beyond the African continent. It is frequently used within diasporas as a marker of identity and historical continuity. Kente illustrates the ability of textiles to convey ideas and values. Like writing, fabric can tell a story. Its patterns show that textiles are often cultural archives as important as written texts.



kente

Kente is an iconic West African textile, particularly associated with the Akan people of Ghana. Composed of narrow strips woven separately and then joined together, it is characterized by vibrant geometric patterns. Each combination of patterns and colors can carry a specific meaning. Some evoke power, others wisdom, prosperity, or the memory of ancestors. Kente is therefore not merely a garment; it constitutes a visual language. Historically linked to royal courts, it has over time become a much broader cultural symbol. Its influence now extends far beyond the African continent. It is frequently used within diasporas as a marker of identity and historical continuity. Kente illustrates the ability of textiles to convey ideas and values. Like writing, fabric can tell a story. Its patterns show that textiles are often cultural archives as important as written texts.

